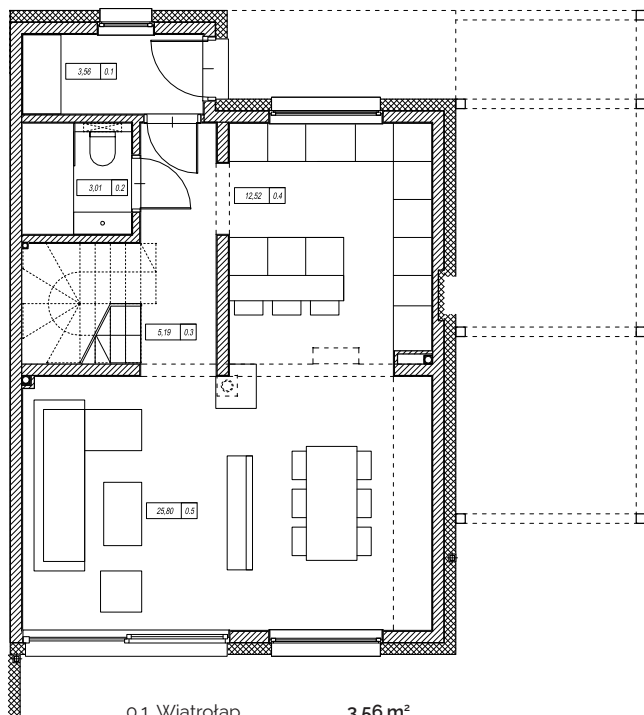
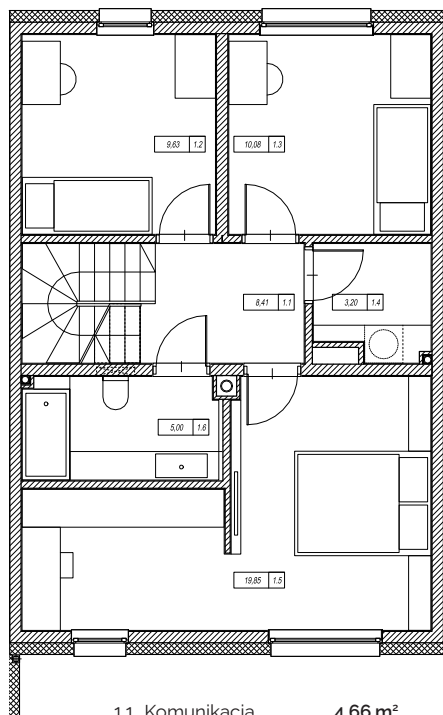


Parter 50,08m²



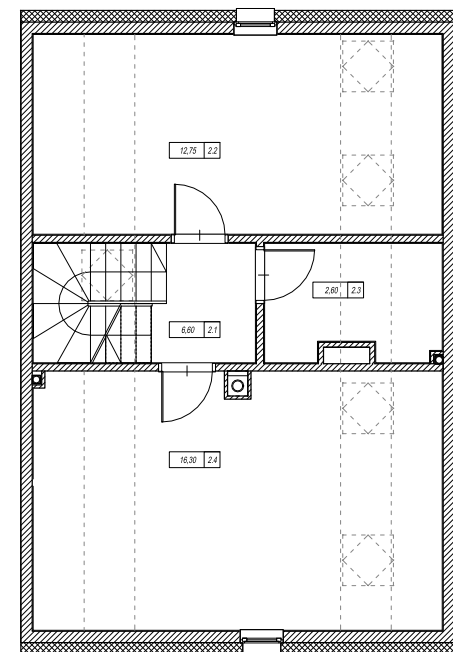
| | |
|---------------|----------------------|
| 0.1 Wiatrołap | 3,56 m ² |
| 0.2 Łazienka | 3,01 m ² |
| 0.3 Korytarz | 5,19 m ² |
| 0.4 Kuchnia | 12,52 m ² |
| 0.5 Salon | 25,80 m ² |

Piętro I 52,42m²



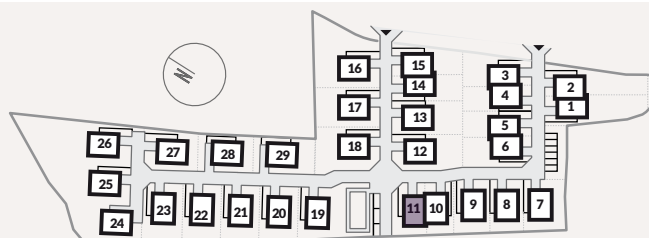
| | |
|-----------------|----------------------|
| 1.1 Komunikacja | 4,66 m ² |
| 1.2 Sypialnia | 9,63 m ² |
| 1.3 Sypialnia | 10,08 m ² |
| 1.4 Pralnia | 3,20 m ² |
| 1.5 Sypialnia | 19,85 m ² |
| 1.6 Łazienka | 5,00 m ² |

Piętro II 34,71m² / 58,01m²



| | | |
|---------------------|----------------------|----------------------|
| 2.1 Komunikacja | 2,87 m ² | 6,60 m ² |
| 2.2 Pokój | 12,75 m ² | 20,38 m ² |
| 2.3 Pom. Techniczne | 2,79 m ² | 4,93 m ² |
| 2.4 Pokój | 16,30 m ² | 26,10 m ² |

+48 513 129 047



PIANO HOUSE
KRAKÓW

Budynek 11 | 137,21m² (160,51m²)